



ADVOCATING FOR INCREASED RESOURCES for CHILD HEALTH

Guidance to Effectively Engage with the Global Financing Facility for Women, Children and Adolescents at the National Level

? What is an investment case?



It is a national, prioritized health plan that is designed to mobilize sustainable financing for health and nutrition to achieve defined results.

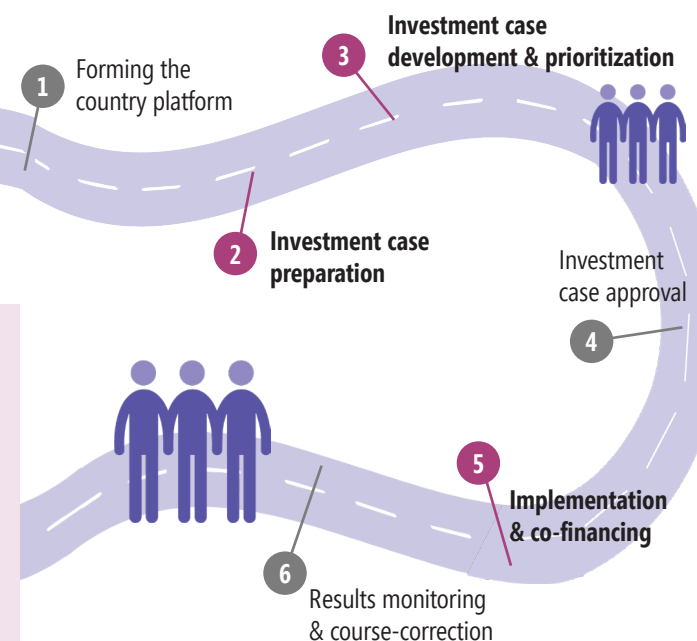
- The GFF approach is tailored to country context and builds on existing Reproductive, Maternal, Newborn, Child and Adolescent Health and Nutrition (RMNCAH +N) plans to avoid duplication of efforts and to strengthen country systems.
- As a prerequisite, child health stakeholders

need to agree on priority interventions; targets for coverage to achieve results; and needed resources to advocate for appropriate skills, supplies, and commodities.

- The Child Health Technical Working Group should link to the RMNCAH+N Steering Committee in your country. If not, use this opportunity to strengthen this structure and advocate for representation in the Investment Case process.

Get involved in 3 of the key steps

of the Investment Case Roadmap:



KEY STEP #2: Investment Case Preparation



- The CH TWG should engage with the MOH and the country platform by identifying champions for child health among multilateral, bilateral, and CSOs.
 - » Use these champions to increase awareness and to ensure representation especially in the 3 key steps.
 - » Check with the GFF liaison officer* on how to participate in the planned partner engagement forums and for information on which CSOs are grantees for civil society coordination.
 - » If there is a CSO Secretariat in your country, use it to increase participation in the country platform and advocate for child health.

*The names of the country GFF Liaison officers can be found at: <https://www.globalfinancingfacility.org/>

KEY STEP #3: Investment Case Development & Prioritization



- It is essential to build and strengthen relationships with the GFF liaison officers in-country and with CSO focal points if they exist as they play a pivotal role in ensuring that information about the investment case process is shared, particularly at the sub-national level.
- It is important for the CH TWG, RMNCAH+N Steering Committee, and CSO representatives to be aware of the priorities, targets, and resource needs for child health services to be effective advocates.

KEY STEP #5: Implementation & Co-Financing



- Strong health information and resource tracking systems are needed to support countries in monitoring the funds allocated to and results achieved in health and nutrition, all the way to the facility level and frontline services.
- Ensure relevant health system & child health indicators are part of program monitoring.